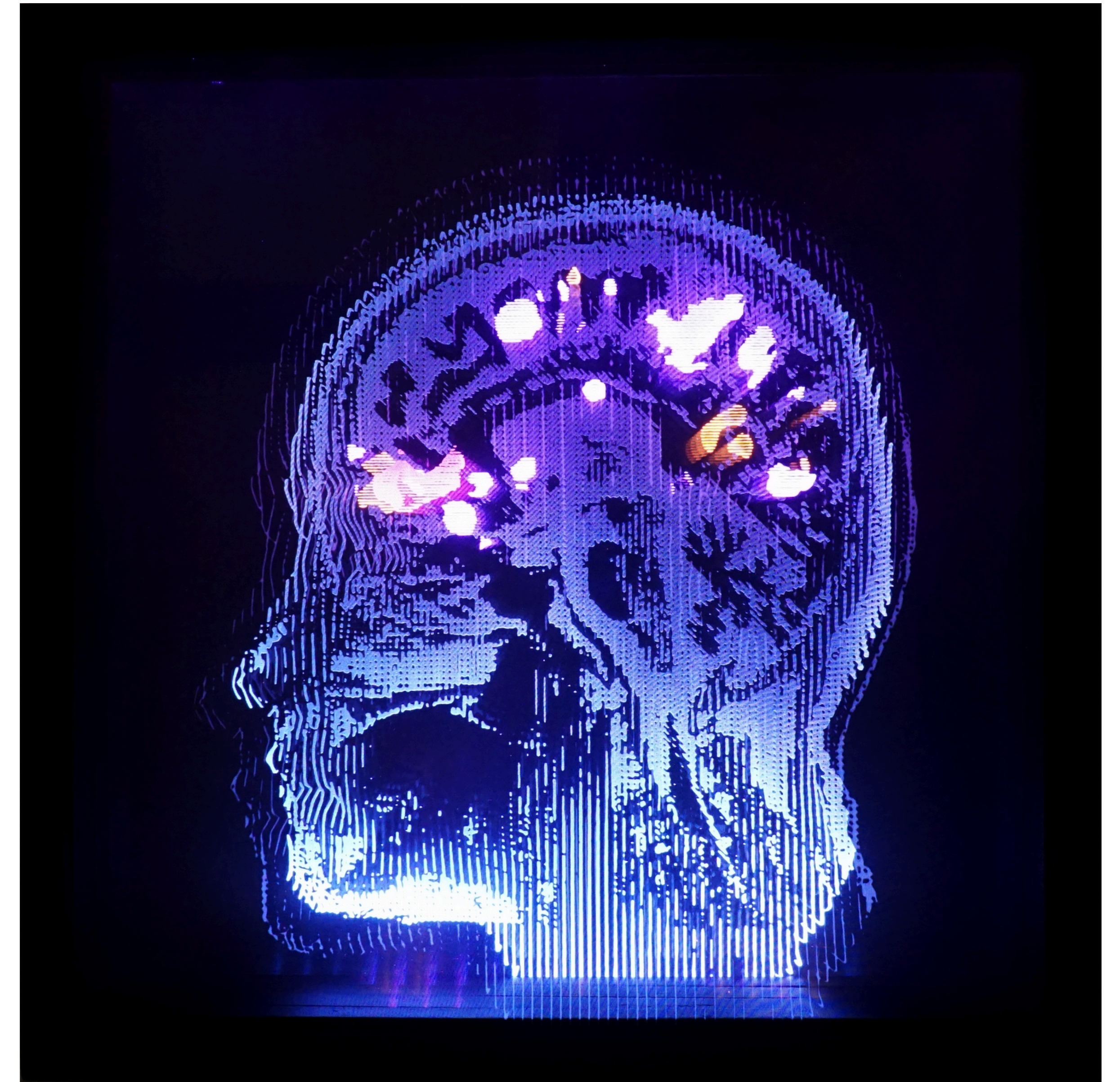


ROAN ALVAREZ

Her interactive works incorporate light-emitting technologies, microcontrollers, sensors, and other electronic components, inviting audiences to engage with dynamic narratives that explore the evolving relationship between humans and technology.



HOMO NOVUS

21 x 21 x 5 inches

Interactive Transmedia (Dye Sublimation on Fabric, (4) Etched Plexiglass Panels, Acrylic, Wood, WS2812 LED, Microcontroller, Slide Potentiometers, Wires, Custom Control Box, Custom Circuit Board.)

